



From Science to Society

Translating today's research into
tomorrow's solutions

Christ College, University of Cambridge

11th - 14th of April 2023

Academic Directors:

Paula Martin Gonzalez

Bernardo Navazo Lopez

Marina Martinez Hernandez

Program Coordinator

Carlota Taboada Villar




Becarios de Excelencia
Rafael del Pino



FUNDACIÓN

RAFAEL
DEL PINO





FROM SCIENCE TO SOCIETY (FS2S): TRANSLATING TODAY'S RESEARCH INTO TOMORROW'S SOLUTIONS

From Science to Society (FS2S) is a scientific workshop co-organized by the Rafael del Pino Alumni Association and the Rafael del Pino Foundation. This seminar is jointly organized within the mission of both institutions to develop the values of leadership and entrepreneurship in Spanish society. In the same vein, FS2S shares the identical objectives of the Rafael del Pino Club of Scientists:

- Promoting and consolidating a global community of Spanish young scientists with interests in interdisciplinary areas such as technological innovation and the academy-industry connection
- Offering a platform for meeting, discussing, and disseminating current, relevant, global, and transcendent topics for the entire scientific community
- Promoting the innovative technological initiative as a fundamental pillar for the Spanish economy

FS2S was launched for the first time in April 2022. Given the success of FS2S 2022, we are delighted to announce that FS2S will be happening again this 2023. The second edition of FS2S will be held at Christ College (University of Cambridge) from April 11th to April 14th, 2023.

Congratulations to all FS2S participants on being selected through a highly competitive application process!! As a FS2S attendee, you are also recognized as a member of the [Club of Scientists](#), which currently comprises more than 1k young Spanish scientists scattered throughout the best institutions and universities on the globe and specialised in all different areas of scientific knowledge.

We wish you the best as you embark upon an opportunity of a lifetime: discussing and first-hand experiencing the atmosphere of research at Cambridge University. During four days, you will discuss different ways of transferring scientific knowledge to society. Throughout the workshop, researchers at the University of Cambridge who are also scientific entrepreneurs, work on projects together with industrial/pharmaceutical companies or help transform politics using science will accompany us and give us their advice and experiences.

We really hope that you enjoy the workshop and make the most of the interaction opportunities provided with the speakers and other FS2S colleagues whilst reflecting on the change, action, and impact you wish to bring throughout your own careers.

Looking forward to meeting you all next April!



AGENDA

11th of April

10:00 – 15:00 *Arrival and check in*

17:00 – 18:30 *Free time*

18:30 – 20:00 **Introductory activity**

Networking and mingle to get to know all participants

Location: The Cambridge Brew House (1 King St, Cambridge CB1 1LH)

20:00 – 23:00 **Dinner and social**

Location: The Cambridge Brew House (1 King St, Cambridge CB1 1LH)



AGENDA

12th of April

8:30 – 9:30 *Breakfast*

09:30 – 10:30 **Opening session**

Working package 1: Deep Tech Startups

10:30 – 11:30 **CYTED: transforming lives through early detection**
Marcel Gehrung, CEO and founder of CYTED and PhD graduate from University of Cambridge

11:30 – 12:00 *Coffee break*

12:00 – 13:00 **MiNK Therapeutics – TBC**
Gerard Rubí-Sans, Associate Scientist at MiNK Therapeutics

13:00 – 14:00 *Lunch*

14:00 – 15:00 **Sorex Sensors: high sensitive sensors transforming industrial products**
Mario de Miguel Ramos, postdoc researcher at University of Cambridge and CTO of Sorex Sensors

15:00 – 15:30 *Coffee break*

15:30 – 16:30 **WaterScope: Smart, simple water testing – for all**
George Lewis, Data Scientist at WaterScope

17:00 – 18:00 **Optional: Yoga Vinyasa Flow**

18:00 – 20:00 *Free time*

20:00 – 22:00 **Dinner and social**
Location: La Raza (4-6 Rose Cres, Cambridge CB2 3LL)



AGENDA

13th of April

8:00 – 9:00 *Breakfast*

Working package 2: Science Policy

09:00 – 10:00 **Science & tech transfer in a Geopolitical Europe: the role of the FS2S community**

Bernardo Navazo, Senior Policy Advisor on International Relations and Defence Policy

10:00 - 11:00 **Cristina Peñasco**

Associate Professor in Public Policy at the Department of Politics and International Studies at the University of Cambridge and Director of Studies in Economics at Queens' College Cambridge

11:00 – 12:00 **Diego Rodríguez Mejias**

Senior Policy Advisor, Regulation for Innovation at Regulatory Horizons Council

12:00 – 12:30 *Coffee break*

12:30 – 13:30 **Keynote speaker: Science Publishers**

Anastasia Widyadari, editor at Springer Nature London (Nature Publishing Group)

13:30 – 14:30 *Lunch*

Working package 1: Deep Tech Startups

14:30 – 15:30 **Keynote speaker: patenting regulation & IP**

Camille Terfvue, associate patent attorney at Mewburn Ellis and PhD graduate from University of Cambridge

15:30 – 16:00 *Coffee break*

16:00 – 17:00 **52North Health**

Mireia Crispin, Chief Digital Officer at 52North Health, Assistant Professor at Cambridge University and Group Leader at Crispin Lab for Computational Cancer

17:30 – 18:30 **Optional: Yoga Vinyasa Flow**

18:30 – 19:45 *Free time*

19:45 – 23:30 **Grand Formal Dinner**

Location: College Hall at Sidney Sussex College (Sidney St, Cambridge CB2 3HU)



AGENDA

14th of April

- 8:00 – 9:00 *Breakfast*
- Working package 3: Academy – Industry permeability*
- 09:00 – 10:00 **AstraZeneca**
Lawrence Midelton, Postdoctoral Scientist at AstraZeneca
- 10:00 – 11:00 **Microsoft**
Melanie F. Pradier, Senior Researcher at Microsoft Research in the UK
- 11:00 – 12:00 **DeepMind**
Sergio Gómez, Staff Research Engineer at DeepMind
- 12:00 – 12:30 *Coffee break*
- 12:30 – 13:30 **Johnson and Johnson**
Kai Stoeber, External Innovation Lead for Johnson & Johnson's World Without Disease Accelerator and Lung Cancer Initiative
- 13:30 – 14:30 *Lunch*
- 14:30 – 15:30 **GSK**
Ruben Drews, Genomic Data Scientist at GSK
- 15:30 – 16:30 **Discussion & closing remarks**
Guest speaker: José María Robles Fraga, Minister-Counselor for Cultural and Scientific Affairs at the Spanish Embassy in the UK
- 16:30 – 18:00 **Optional: tour in Cambridge**
- 18:00 **Check out and departure**

SPEAKERS

Marcel Gehrung

Marcel Gehrung received his doctorate in Cambridge. He is the cofounder and CEO of Cytel Ltd, a company that uses artificial intelligence to find biomarkers that detect cancer and other diseases early. They have raised more than \$11 million in capital from grants and venture capital and have 30 full-time employees. Marcel made it into the Forbes '30 Under 30' list when he was just 29 years old. He is among the top 30 most successful science and healthcare founders under the age of 30.

With his company "Cytel", Gehrung has developed a method to use artificial intelligence (AI) to detect cancer and other diseases at an early stage. The diagnostic method is primarily used to detect Barrett's esophagus, an early form of esophageal cancer. His company is based in Cambridge and employs 60 people. His company's diagnosis has already helped thousands of patients. Since 2020, CEO Marcel Gehrung has already raised 50 million euros in capital with his company.



Gerard Rubí-Sans



Gerard is a PhD in Biomedical Engineering by Universitat Politècnica de Catalunya. During his doctoral studies, he developed a three-dimensional colorectal cancer model to study cell-extracellular matrix interactions during disease development, identify potential therapeutic targets and provide a drug screening platform for personalized medicine.

He is now an Associate Scientist at MiNK Therapeutics, a clinical-stage precision oncology startup developing allogeneic, invariant natural killer T cell therapies for cancer and other immune-mediated diseases.

Mario de Miguel Ramos

Mario is a MEng in Telecommunications and PhD in Electronic Engineering Systems by the Universidad Politécnica de Madrid (UPM). Currently, he is a Postdoctoral Research Associate at the Electronic Devices and Materials Group (EDM) of the Electrical Engineering Division of the University of Cambridge. His main field of study is the design, simulation, fabrication, and characterization of piezoelectric sensors based on ZnO and AlN acoustic wave resonators for in liquid and gas sensing applications.

Mario is also a co-founder of Sorex Sensors. Sorex Sensors has licensed patents from Cambridge Enterprise and the University of Warwick and has ongoing collaborations with the University of Cambridge, the University of Warwick and the Universidad Politécnica de Madrid. Its core IP has been granted in the USA and EU.



George Lewis

George is a data scientist at WaterScope, a Cambridge-based social enterprise working to address global water inequality through the development of microscopes that offer simple, rapid, bacterial testing of drinking water.



George has been working at WaterScope whilst finishing up his PhD at the University of Cambridge where he works on the 3D imaging of magnetic fields at the nanoscale to better understand materials ranging from anti-cancer medicines to next-generation computer chips. Motivated by previous research positions in academic, government, industry and start-up settings, George is looking to use his scientific background to make a positive impact.

Cristina Peñasco



Cristina Peñasco is an Associate Professor in Public Policy at the Department of Politics and International Studies at the University of Cambridge, Director of the MPhil in Public Policy at the University of Cambridge and Director of Studies in Economics at Queens' College Cambridge. She is also a Centre Fellow at the Centre for the Environment, Energy and Natural Resource Governance (C-EENRG) hosted at the Department of Land Economy, an associate researcher of the Bennett Institute for Public Policy (University of Cambridge) and an affiliated researcher to the Laboratoire interdisciplinaire d'évaluation des politiques publiques (LIEPP) at Sciences Po (Paris,

France). She holds a PhD in Economics from the Spanish National Research Council (CSIC) (Spain) and her research lines bring together multidisciplinary research in environmental economics, innovation policy and energy economics in green and energy efficiency technologies, with a focus on the evaluation of policy instruments enabling the transition to decarbonised economies.

Diego Rodríguez Mejías

Diego is a Senior Policy Advisor at the Regulatory Horizons Council, an independent expert committee sponsored by the Department of Science, Innovation and Technology. There he advises the UK government on regulatory reform to encourage the rapid and safe development of emerging technologies. He recently led the publication of a report on Neurotechnology regulation. Before this, he worked at the UK Government Office for Science and at the GSMA, the international association of the telecommunications industry. Diego has a masters in Technology Policy from the University of Cambridge with the support of a scholarship from la Fundación Rafael del Pino and a bachelors in Physics and Philosophy from King's College London.



Anastasia Widyadari

Anastasia joined Springer Nature in May 2022 as an Associate Editor for the BMC Series. She holds a PhD in Medicine from University of Leeds, Institute of Medical Research, where she studied the role of DOCK4 in glioblastoma, and the pathological effects of radiotherapy on the vasculature of recurrent glioblastoma. Previously, she earned her BSc (Hons) degree in Biomedical Sciences from the University of Brighton. In 2016, Anastasia worked at the Eijkman Institute for Molecular Biology in Jakarta, Indonesia, studying the genetics of obesity. She is committed to championing open access and reproducible research and is passionate about research integrity in science.



Anastasia is based in the Springer Nature London office and is the Editor of *BMC Medical Ethics*, *BMC Complementary Medicine and Therapies*, *BMC Pharmacology and Toxicology*, and *BMC Proceedings*.

Camille Terfve



Camille has a PhD from the University of Cambridge and the EMBL-European Bioinformatics Institute. Her PhD research focused on the combined analysis of various sources of high-content data to reverse engineer healthy and diseased cellular signalling networks, and the effects of drugs on these networks. Prior to that, she completed a Master's degree in Bioengineering at the University of Brussels and a Masters in Computational Biology at the University of Cambridge. She joined Mewburn Ellis LLP in 2019, having qualified as a Chartered Patent Attorney and European Patent Attorney in 2018.

Camille's clients include UK- and EU-based large and small biotechnology companies, universities and research charities. She also represents overseas clients at the European Patent Office, including multinational pharmaceutical companies, US biotech companies of all sizes, and US universities. She has particular experience working with companies and organizations that focus on data driven technologies.

She is experienced in providing advice on IP management to companies of all sizes, as well as Freedom to Operate, patentability, validity and infringement, and due diligence advice.

Mireia Crispin

Dr Mireia Crispin is an Assistant Professor in the Department of Oncology of the University of Cambridge, where she focuses on the development of data integration models to understand response to cancer therapies. She is also the Chief Digital Officer of 52North Health, a biotech start-up developing affordable at-home tests for cancer patients. She previously worked at Memorial Sloan Kettering Cancer Center in New York, and was the Director of the Healthcare Innovation programme of the Center for the Governance of Change at IE University (Madrid, Spain), focusing on policy challenges for the integration of AI and digital health in European healthcare.



Mireia holds a PhD in Particle Physics from the University of Oxford, where she worked on data analysis methods for the search for dark matter at the Large Hadron Collider at CERN. She is an author in over 400 publications and has received numerous national and international awards for the academic, entrepreneurial and outreach aspects of her work.

Lawrence Middleton



Lawrence is a postdoctoral researcher within the Centre for Genomics Research in AstraZeneca. Prior to joining AstraZeneca he was doing a DPhil. in Statistics at the University of Oxford where he specialised in computational statistics, in particular Markov Chain Monte Carlo methods and high performance computing. Since starting at AstraZeneca he has been involved in a number of projects under the supervision of Dimitrios Vitsios, working at the interface of machine learning, data science and statistics. His research interests lie in applying theoretical insights to real world datasets to extract additional value from complex and noisy datasets.



Melanie F. Pradier

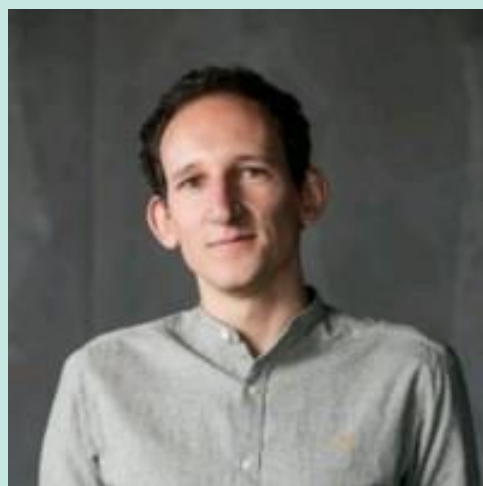
Melanie F. Pradier is a senior researcher at Microsoft Research in the UK, working on probabilistic machine learning for the life sciences and healthcare. Currently, she develops deep generative models to help decode the immune system and diagnose diseases within the



Antigen Map Project, as part of Microsoft Immunomics. Previously, she was a postdoc at Harvard University where she developed human-centric ML models to personalize antidepressant prescriptions and designing meaningful priors for deep Bayesian models. Melanie got her PhD on Bayesian Nonparametric Models at the Universidad Carlos III in Madrid. She has also worked at Sony European Research Center, Sony Corporation RD, and the Memorial Sloan-Kettering Cancer Center. Her current interests include generative models, Bayesian modelling, applied causality, and healthcare applications.

Sergio Gómez Colmenarejo

Sergio completed a Mathematics and Computer Science degree at Universidad Autónoma de Madrid. He then briefly joined Instituto de Ingeniería del Conocimiento where he worked in machine learning applied to the health and energy sectors before moving to London to pursue a masters in Machine Learning and Computational Statistics from University College London as a Caja Madrid scholar. After finishing his masters Sergio joined DeepMind, a small but very ambitious AI startup which was acquired by Google shortly after.



Sergio's main focus as a research engineer at DeepMind is designing and building software infrastructure to enable progress in large scale machine learning. During his time there, DeepMind has been responsible for some of the most important recent breakthroughs in machine learning: superhuman Go playing, record-beating protein folding, etc.

Kai Stoeber

Kai is the External Innovation Lead for Johnson & Johnson's World Without Disease Accelerator and Lung Cancer Initiative. In this role he is responsible for identifying and evaluating external opportunities, in partnership with the Johnson & Johnson Global External Innovation network, to accelerate the development of an innovative portfolio of projects, assets and solutions in support of disease prevention, interception and cure.

Prior to joining Johnson & Johnson Innovation, he was Vice President for Global Innovation at the Japanese pharmaceutical company Shionogi. In academia he had successful tenures at the University of Cambridge and University College London where his research focused on cell-cycle control of chromosomal replication and cell division. He identified new drug targets and cancer biomarkers commercially developed by start-up and biopharmaceutical companies.



Ruben Drews



Ruben is a successful cancer scientist and science communicator. Over the last decade, he has worked in computational cancer biology at multiple universities, e.g. the DKFZ in Heidelberg (DE), Universitat Pompeu Fabra (ES), the Cancer Research UK Cambridge Institute in Cambridge (UK) and since last summer in industry at GlaxoSmithKline. His focus is on genomic alterations, specifically chromosomal instability and their influence in cancer initiation and development. Since his first co-authorship in 2012 he has supported the Liver Cancer Evolution and the Pan-Cancer Analysis of Whole Genomes consortia as well as spearheading his own research project that got

published in Nature last year. His work led to a patent application and the successful development of a startup. Next to his research, he has been working with the Cancer Research UK as a science communicator to promote cancer research in over 15 events to date with audiences ranging from 5 to over 90 years of age.

FS2S PARTICIPANTS

Name	University/Research Center	Position
Betsy Verónica Arévalo Jaimes	Institute for Bioengineering of Catalonia	PhD student
Laura Bernáez Timón	Universidad Politécnica de Cataluña	Postdoctoral researcher and Tech Transfer
Bruna Calsina Pla-Giribert	Centro Nacional de Investigaciones Oncológicas (CNIO)	Researcher
Antonio Cantarell Hidalgo	Instituto de Salud Carlos III	R+D Technician
Javier Carnerero Cano	Imperial College London	PhD student
Juan Carrillo Ríos	Universidad de Málaga	PhD student
Javier Cerezo Lafuente	Novartis	Associate Director of Data Science
Ana de Pablos Aragonese	CNIO	PhD student
Alberto Díaz Talavera	CNIO / CIBERER	Postdoctoral Researcher
Pablo Jose Diego Simon	ETH Zürich	Master student
Sandra Doval Moreno	Universidad Complutense de Madrid	PhD Student
Lola Fariñas	Spanish National Research Council (CSIC)	Postdoctoral researcher
Elena Fernandez Castañer	Institute for Bioengineering of Catalonia	Technology Transfer Technician
Edgar Fuentes Fuentes	Institute for Bioengineering of Catalonia	Technology Transfer Technician
David Hernández Fresno	Universidad de Barcelona	PhD Student
Oscar Laguía Candelaria	CNIO	PhD Student
Francisco Lozano	KTH Royal Institute of Technology	Postdoctoral researcher
Beatriz Martínez Burgo	EMBL EBI	Scientific Database Curator in Molecular Complexes
Noemí Martínez Conde	Universitat de Barcelona	PhD student
Víctor Mejías Pérez	Instituto de Bioingeniería de Cataluña	PhD student
German Moreno González	Columbia Business School	2nd year MBA
Miguel Palenzuela Cebrián	SUSPOL Polímeros Sostenibles (y Universidad de Alcalá)	CEO (and Postdoctoral researcher)
Alonso Parrón Yuste	VHIR - Vall d'Hebron Institut of Research	Innovation Project Manager
Marta Pulgarín Alfaro	CNIC	PhD student
Paula Queipo Álvarez	UC3M	PhD student
Gema Quiñonero López	Vall d'Hebron Institut de Recerca (VHIR)	Master student
Anna Sampietro	Universitat de Barcelona	PhD student
Rocío Sánchez	University Hospital Zurich	PhD student
Javier Sanguino	ETH Zurich	Master student
Paloma Solá Castrillo	IRB Barcelona	PhD student
Ignacio Taguas Garzón	Universidad Complutense de Madrid	PhD student
Alejandro Tlaie Boria	Ernst Strüngmann Institute for Neuroscience	Postdoctoral researcher
José Antonio Torres Alcaide	CNIO	PhD student
Natalia Torres Cónsul	Imperial College London	PhD student

11th April - Arrival

12th April - Deep Tech Startups

13th April - Science Policy & Tech Startups

14th April - Academy <-> Industry Permeability

7:00

8:00	Breakfast	Breakfast	Breakfast
9:00	Opening session	Talk 1: Bernardo Navazo	Talk 1: Lawrence Middelton, AstraZeneca
10:00	Talk 1: Marcel Gehrung, CYTED	Talk 2: Cristina Peñasco	Talk 2: Melanie Pradier, Microsoft
11:00	Coffee Break	Talk 3: Diego Rodriguez	Talk 3: Sergio Gómez, DeepMind
12:00	Talk 2: Gerard Rubi-Sans, MiNK Therapeutics - TBC	Coffee Break	Coffee Break
13:00	Lunch	Talk 4: Anastasia Nature Publishing Group	Talk 4: Kai Stoerber, Johnson & Johnson
14:00	Talk 3: Mario de Miguel Ramos, Sorex Sensors	Lunch	Lunch
15:00	Coffee Break	Talk 5: Camille Terfve: Patenting and IP	Talk 5: Ruben Drews, GSK
16:00	Talk 4: George Lewis, Waterscope	Coffee Break	Discussion and closing remarks Guest talk: José María Robles Fraga
17:00	Optional: Yoga Vinyasa Flow	Talk 6: Mireia Crispin, 52North Health	Optional: Tour in Cambridge
18:00	Free time	Free time	
19:00			
20:00	Introductory activity	Grand Formal Dinner (Sydney Sussex College)	Check-out and departure
21:00			
22:00	Networking Activity #1: Cambridge Brew House		
23:00			

Deep Tech Startups
Academy <-> Industry
Science Policy
Institutional



FS2S ORGANIZERS

From Science to Society is jointly co-organized by the Rafael del Pino Alumni Association and the Rafael del Pino Foundation. During the first edition of FS2S you will be accompanied by:



Ana M. Cebrián del Pino

Vicepresident of Fundación Rafael del Pino

Vicente J. Montes Gan

Director of Fundación Rafael del Pino

vmontes@frdelpino.es

Carlota Taboada Villar

Research and Online Programs Director of Fundación Rafael del Pino

ctaboada@frdelpino.es



Bernardo Navazo López

Former President of Asociación de Becarios Rafael del Pino

bernardo.navazo@uc3m.es

Paula Martín González

Co-President of the Rafael del Pino Club of Scientists

paula.martingonzalez@cruk.cam.ac.uk

Marina Martínez Hernández

Co-President of the Rafael del Pino Club of Scientists

mmartinez@ibecbarcelona.eu

Bernardo Navazo López



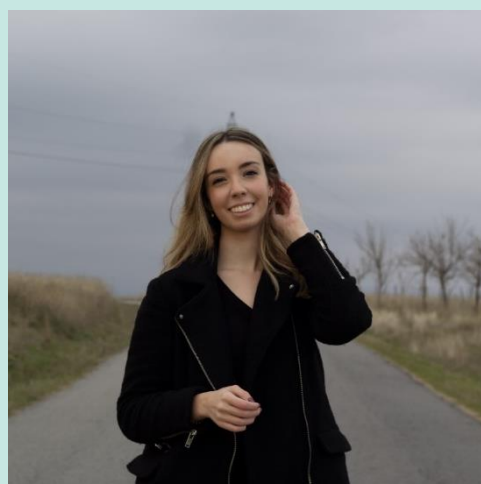
Bernardo Navazo is a Defence and Political Risk Analyst focusing on international relations and the impact of technology in great power competition. He holds a B.Sc. & M.Sc. degree in Aeronautical Engineering (UPM - Polytech University of Madrid), a BA & MA in Political Science (UCM - Universidad Complutense de Madrid) and a Master's degree in International Affairs (Columbia University), where he wrote his master's thesis on neorealism and bipolarity under the aegis of Dr. Kenneth N. Waltz.

Right after his studies, Navazo worked for two years for several candidates and public officials in New York City and Washington DC. As a political risk analyst, Navazo has done freelance work for top-notch political risk consultancy firms and institutions such as Eurasia Group, Teneo, and the Spanish Ministries of Defence and Foreign Affairs, among others. In 2018-2020 Navazo worked for the Presidency of the Government of Spain at the Department of National Affairs as a Senior Policy Analyst. In that capacity, he was involved in several intra-government consultations on a broad variety of topics, many of them related to technology policies and the Spanish and the EU role amidst the growing US-China rivalry.

Paula Martín González

Paula Martin-Gonzalez is a third-year PhD student at Cancer Research UK Cambridge Institute where her work focuses on developing predictive models for cancer using medical image analysis. She is also a visiting researcher in the Alan Turing Institute where she seeks to develop further graph representation learning methods in the field of medical imaging.

She has received the STEM for Britain award run by the House of Commons Parliamentary Scientific Committee, recognizing the impact of her research on predictive modelling applied to healthcare. She is also the Treasurer of the Rafael del Pino Alumni Association as well as the co-President of its Club of Scientists where she seeks to advance the role scientific innovation on the Spanish economy.



Marina Martínez Hernández



Marina Martínez-Hernandez holds a B.Sc. in Biomedical Engineering (Universidad Carlos III Madrid) and a M.Sc. in Bioinformatics and Big Data (KTH Royal Institute of Technology, Karolinska Institutet, and Stockholm University). During her undergraduate and postgraduate studies, Marina has performed research in internationally recognized institutions such as the Wyss Institute for Biologically Inspired Engineering (Harvard Medical School), SciLifeLab (Karolinska Institutet), Centro Nacional de Investigaciones Oncológicas (CNIO), or the Krasnow Institute of Advanced Study (George Mason University), among others.

Currently, she is a third-year PhD “La Caixa” Fellow at the Institute for Bioengineering of Catalonia. Her research focuses on developing therapies to promote *in situ* cardiac regeneration to alleviate the aftermaths of myocardial infarction. She is also a visiting scholar at Imperial College London and Vall d'Hebron Research Institute (VHIR). Marina is a member of the Rafael del Pino Alumni Board as well as the co-President of its Club of Scientists.

Ana M. Cebrián del Pino



Ana M. Cebrián del Pino holds a degree in Business Administration and Management (Comillas Pontifical University); MBA from McGill University-Desautels Faculty of Management. She furthered her studies at Northeastern University. She has been a Foreign Trade Technician at the Economic and Commercial Office of the Spanish Embassy in Warsaw, Analyst in the Private Equity Department at Pactio Gestión Asset Management and Senior Research Analyst at Brandywine Global; She has been director of the Online Channel at El Ganso S.A. (Family patron).

Vicente J. Montes Gan

Vicente J. Montes Gan is the Director (CEO) of the Rafael del Pino Foundation, Vicepresident of the Spanish Association of Foundations, Founder and President of the NGO Liberdome, member of the Board of Trustees of the NGO Flying Doctors AMREF HEALTH AFRICA, and member of the Editorial Boards of the academic magazine Informacion Comercial Espanola.

Previous positions include: Vicepresident of the UN Global Compact Spanish Network; President of the Spanish State Economists & Trade Specialist Association; Economic and Commercial Counsellor at the Embassy of Spain in Angola, Namibia, Congo, DR Congo, Sao Tome and Principe and Zambia; Director at ICEX; and Deputy Director General of the Spanish Court of Competition. He has also been Professor of Economic Analysis (Carlos III University of Madrid) and Chairman of the Department of Economics of the Ateneo de Madrid. He holds a Bachelor in Economics (Autonoma University of Madrid), a Doctorate of Philosophy (School of Law, Complutense University of Madrid) and is Member of the European Academy of Sciences and Arts. He is member of the Spanish State Economist and Trade Specialist Corps, Officer of the Royal Order of Isabel La Catolica, Leao de Oro of the Republic of Angola (AIA) and I Essay Prize Casa Africa.



Carlota Taboada Villar



Carlota Taboada is the Research & Online Programs Director at the Rafael del Pino Foundation, being responsible for developing and testing new in-person and virtual formats for seminars, courses, and programmes that engage dynamic audiences in in-depth, meaningful experiences around the institution. Prior to this, she worked as Cultural Manager at Casa del Lector-GSR Foundation being responsible for disseminating the institution's philosophy with a strong commitment to collaboration and impact. Previously she worked at Instituto Cervantes and Mumbai University (India). She holds a Bachelor's Degree in English Studies (University of Santiago de

Compostela), an MPhil in in Culture Studies (Carlos III University of Madrid), and an MPhil in Modern Languages & Education Research (University of Murcia).



FS2S PROGRAMME LOGISTICS

FS2S venue

From Science to Society 2023 workshop is held at the Plumb Auditorium of Christ College (see map on page 25), University of Cambridge (St Andrew's St, Cambridge CB2 3BU, United Kingdom). All sessions will be taking place here, unless specified in the detailed programme.

FS2S participants will be accommodated in superior single rooms at Christ College.

Directions to Cambridge

The City of Cambridge is located in the East of England, 50 miles north of London. It is well served by road and rail links and is within easy distance of the major London airports.

EU flights

London Stansted Airport is just 30 miles from Cambridge. An hourly 35 min direct train service runs from Stansted to the City. We recommend using London Stansted Airport.

London Gatwick is about 75 miles from Cambridge. You can travel from Gatwick Airport to Cambridge by train. The fastest trains take around 2 hours.

Luton Airport is about 40 miles from Cambridge. There is no direct connection between Luton Airport and Cambridge. You can take a train from London Luton Airport (LTN) to Cambridge via Luton Station Interchange station. The whole journey takes about 2.5 hours.

It is also possible to fly directly into Cambridge by using Cambridge International Airport. However, a very limited number of flights are available to and from Cambridge International Airport.

Intercontinental flights

London Heathrow Airport is situated 2h from Cambridge. It is possible to take a train into London King's Cross and then take another train to Cambridge.

Train

There are regular services to Cambridge from London King's Cross and London Liverpool Street stations. The fastest trains leave from London King's Cross every half an hour and take 50 min.

Car

Cambridge is an hour's ride from London, depending on traffic. Please do note that the centre of Cambridge is mostly free of private cars, especially around the conference venue. Parking at the FS2S venue is not available.



FS2S registration

Registration of participants will take place on 11th April at the Porter's Lodge of Christ College (see map on page 25). The university staff will store your luggage if arriving before the room check-in time.

The first activity (Cambridge tour) is scheduled at 6:30 pm on that day, so we encourage all participants to arrive on time to participate in it. We kindly ask you to send us your estimated arrival time and inform us in advance if you need to register outside the proposed hours.

Networking activities

All FS2S participants are invited to different networking activities taking place after the daily talks. We encourage assistance and vivid interaction between attendees to innovate, connect and get to know your workshop colleagues.

Networking at The Cambridge Brew House (11th April)

For the first ice breaker activity we will meet you at The Cambridge Brew House. We asked you to provide some information in advance to prepare an introductory activity. Please, remember to send it as it is important to get to know your colleagues better. If you have not sent it yet, remember to do it as soon as possible via email to the organizers (Marina, mmartinez@ibebarcelona.eu)

Meeting point: 18:30, The Cambridge Brew House (1 King St, Cambridge CB1 1LH, see map on page 26)

Networking at La Raza (12th April)

The evening on the 12th of April we will meet at La Raza First established in 2003, La Raza is now one of Cambridge's favourite restaurants, combining the relaxed vibe of a cocktail bar with the sophistication of a restaurant and lively atmosphere of a live music venue.

Meeting point: 20:00 at La Raza (4-6 Rose Cres, Cambridge CB2 3LL, see map on page 26).

Yoga Vinyasa Flow (12th and 13th April)

On the 12th and 13th of April, we will attend Yoga Vinyasa Flow classes to let our hair down after a long day in lectures. It will take place in the same location to ease logistics. In any case, we will provide 30 minutes after the talks to change clothes and get ready for the activity!

Location: Function Room (Christ's College)



City Centre Tour (14th April)

A guided walking tour of the University and the Colleges is the best way to see Cambridge. After the workshop we will take you on a tour around Cambridge. Please note that the beautiful King's College Chapel, the finest building of its type in Europe, will be closed at that time. Therefore, we highly recommend you visit on the arrival date previous to the workshop.

Dress code: casual wear, comfortable shoes are advisable

Gala Dinner (13th April)

All attendees of FS2S are invited to a Grand Formal Dinner at the Old Library of Sidney Sussex College, located on Sidney St, Cambridge CB2 3HU, a short 5-minute walk from Christ's College (see map on page 26).

20:00 – 20:30: Drinks reception starts

20:30 – 23:30: Three-course formal dinner at the College Hall of Sidney Sussex College.

Dress code: business wear

Meeting point: 19:00 pm, Sidney Sussex College, Cambridge CB2 3HU

Catering

We are delighted to offer full coverage of all meals, snacks, and refreshment throughout the conference daily sessions taking place from the 12th to the 14th of April. This excludes dinners on the 11th and 12th of April. On the formal Gala Dinner (13th of April) we will provide a full warm dinner to all participants. Therefore, we kindly ask you to share with us any food restrictions/allergies that you may have. Please note that we can only offer special menus to those who inform us in advance to arrange it.

Dress code

For your stay at Cambridge University, we suggest you use smart casual wear. Comfortable shoes are especially advisable on the last day (14th of April) because the city centre tour requires a bit of walking. For the social activities on Monday 11th April and Tuesday 12th April there is no pre-set dress code. Business formal attire is required for the Formal Dinner taking place on Wednesday 13th April.



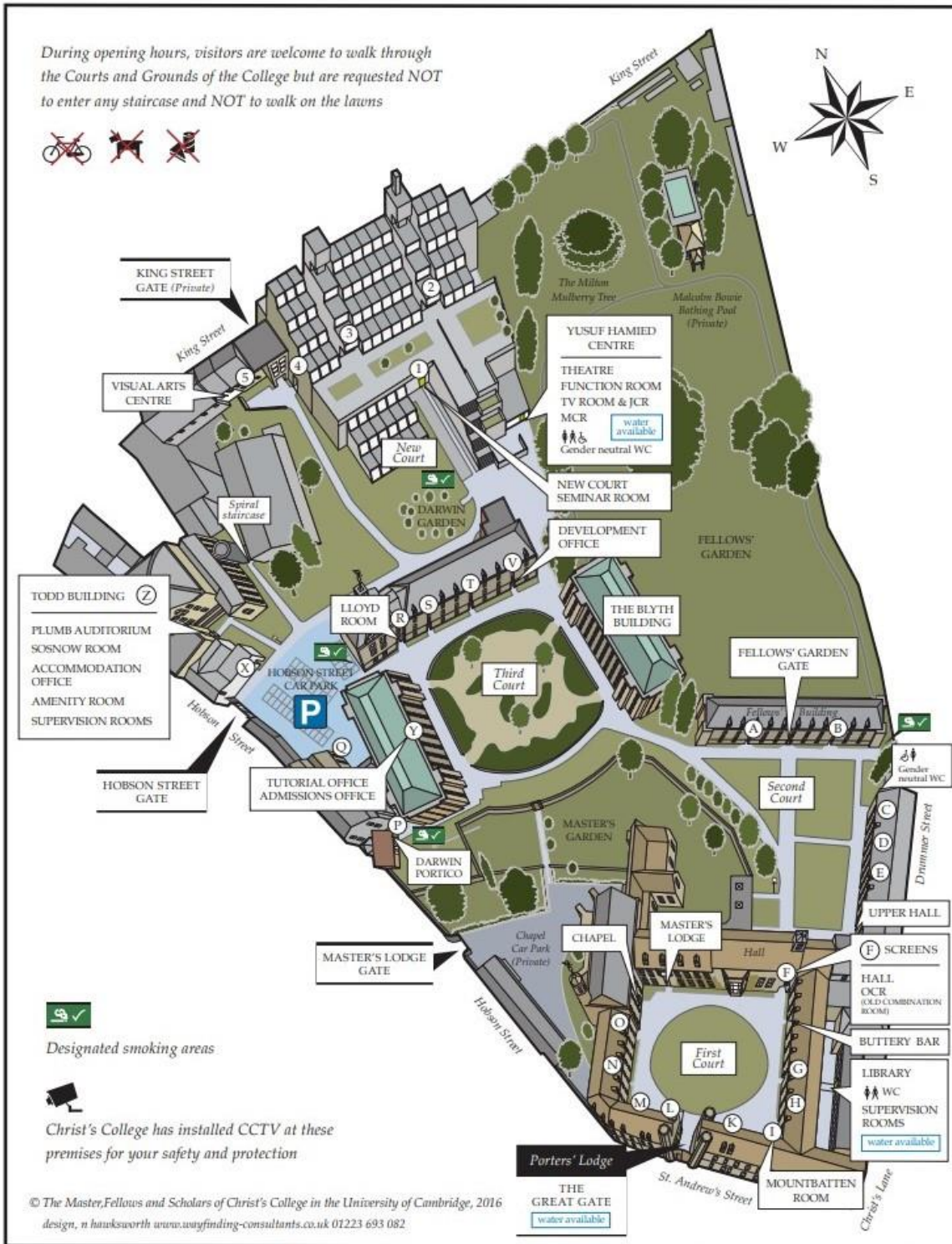
Photography and video privacy notice

Please be aware that attendance to this workshop confirms acceptance of this privacy notice: the organisation will be capturing the images of attendees and speakers at its events with photographic and video recording devices to be used for exclusive purposes of the organisation, including being used for marketing, the organisation's websites, social media, or historical records of the society and may be shown to the public at large.

The organisation respects the privacy of individuals and their rights to their personal information. The organisation will remove any photos upon written request by individuals who object to the use of the image where they are recognizable within the image. Please e-mail ctaboada@frdelpino.es if you have any questions about your data protection.

Getting around

Christ's College's Map



Cambridge's Map



Main FS2S venue
Christ College



FS2S Accommodation
Christ's College



King's College Chapel
King's College
Meeting point tour Cambridge



FS2S Grand Formal Dinner
Sidney Sussex College
Old Chapel



The Cambridge Brew House
1 King St, Cambridge CB1 1LH
FS2S Networking activity #1



La Raza
4-6 Rose Cres, Cambridge CB2 3LL
FS2S Networking activity #2



DISCOVER CAMBRIDGE

What to do in Cambridge?

There's something for everyone when it comes to entertainment in Cambridge. Here we highlight the most popular attractions in Cambridge in case you want to use your free time to explore the city.

A. Museums

Fitzwilliam Museum ([web](#)): From antiquity to the present day, the Fitzwilliam houses a world-renowned collection of over half a million beautiful works of art, masterpiece paintings and historical artefacts. Opening times: Tuesdays to Saturdays 10 am to 5 pm. Free entry but needs to be booked in advance.

Cambridge University Botanic Gardens ([web](#)): It holds a collection of over 8,000 plant species from all over the world to facilitate teaching and research. Since its foundation, however, the Garden has also provided a beautiful place for everybody to enjoy and benefit from – a series of wonderful landscapes through which to discover the drama of plant diversity. Opening times: everyday from 10 am to 6 pm. Entry fee and early booking applies.

Scott Polar Research Institute Museum ([web](#)): On the side of an Antarctic volcano Frank Debenham realised that British polar explorers needed a headquarters – somewhere to share their findings and learn from each other. The idea for the Scott Polar Research Institute was born, and in 1920 it was officially founded as part of the University of Cambridge. Find out about the Institute's origin as a memorial to Captain Scott and his men, and the pioneering research carried out at the Institute over the last 100 years. Opening times: Thursdays, Fridays, and Saturdays from 10 am-12:30 pm to 1:30 pm-4 pm. Free entry.

Kettle's Yard House ([web](#)): In a quiet corner of Cambridge, overlooking St Peter's Church, is a beautiful house filled with beautiful objects, once the home of H.S (Jim) Ede and his wife Helen. Between 1957 and 1973 Kettle's Yard was the home of Jim and Helen Ede. In the 1920s and 30s Jim had been a curator at the Tate Gallery in London. Thanks to his friendships with artists and other like-minded people, over the years he gathered a remarkable collection, including paintings by Ben and Winifred Nicholson, Alfred Wallis, Christopher Wood, David Jones and Joan Miró, as well as sculptures by Henri Gaudier-Brzeska, Constantin Brancusi, Henry Moore and Barbara Hepworth. Opening times: Tuesday to Sunday from 11 am to 5 pm. Free entry but needs to be booked in advance.



Museum of Archaeology and Anthropology (web): MAA is a museum of humanity's history over hundreds of thousands of years, of world cultures over recent centuries, and of Indigenous life and art in the present. MAA is also a local museum. For nearly 140 years it has been the place where archaeological finds from Cambridge and from our region are preserved, researched and displayed. Locally and globally, it is a revelation of people's stories, through extraordinary things they have made, past and present. Opening times: Tuesday to Saturday from 10 am to 5 pm, Sunday from 12 pm to 5 pm. Free entry but needs to be booked in advance.

Museum of Zoology (web): The Museum is one of Cambridge's major attractions, displaying thousands of specimens spanning the entire animal kingdom, from elephants, giant ground sloths and giraffes, to birds, reptiles, insects and molluscs. It is part of the University of Cambridge Department of Zoology and welcomes over 100,000 visitors every year. The Museum holds many wonderful treasures, such as specimens discovered by the great naturalists, including Charles Darwin and Alfred Russel Wallace. The collection contains approximately two million items and thousands of these are on display. Changing displays and temporary exhibitions highlight unusual and significant items from the Museum's stores, such as the skeleton of the extinct Dodo. Opening times: Tuesday to Saturday from 10 am to 4.30 pm and Sunday from 12 pm to 4:30 pm. Free entry.

Whipple Museum on the History of Science (web): The museum's holdings are particularly strong in material dating from the 17th to the 19th centuries, especially objects produced by English instrument makers, although the collection contains objects dating from the medieval period to the present day. Instruments of astronomy, navigation, surveying, drawing and calculating are well represented, as are sundials, mathematical instruments and early electrical apparatus. The Whipple Museum was founded in 1944 when Robert Stewart Whipple presented his collection of scientific instruments to the University of Cambridge. Opening times: Monday to Friday from 12:30 pm to 4:30 pm. Free entry but needs to be booked in advance.

B. Tourist attractions

Parks and Green Spaces: Cambridge truly is a green city – the natural fen landscape flows right into the centre along the river Cam, cows grazing within sight of Kings College Chapel. You can picnic under the trees along The Backs and admire the stunning displays of flowering bulbs in Spring, or while away the hours in beautifully kept College grounds and Fellows gardens.

The public parks and commons provide a paradise for children with play equipment, football pitches and tennis courts. Riverside parks, grassy commons, cool meadows and flower-filled gardens shape the city as much as its history and heritage. Parks are plentiful. Jesus Green, close to Jesus College, is a green space in the city centre. The River Cam brushes its northern edge and an avenue of London plane trees provides a leafy canopy over footpaths.

Parker's Piece is an open space used by locals to lounge around and play football and cricket on the grass; it is famous as the place where, in 1848, students agreed a set of simple



guidelines for football which were to influence the development of the Football Association rules. Midsummer Common is an ancient area of grassland bordered by the River Cam, where you can see the boathouses of the Colleges of the University and watch the rowers on the water.

Architecture and Heritage: Cambridge is the country's most beautiful historic city. Its elegant centre is framed by architectural triumphs, surrounded by green spaces and home to the University of Cambridge's world-famous colleges.

Cambridge lives and breathes its past in its present; wander through the winding streets and follow in the steps of the city's luminaries including Charles Darwin, Alfred Tennyson and Sylvia Plath to name but a few. Poets, philosophers, scientists, medics, engineers, prime ministers and Nobel Peace Prize winners have all left their mark here.

Admire the picturesque waters of the River Cam and gaze in wonder at the Bridge of Sighs at St John's and the Mathematical Bridge at Queens'. Enjoy the Fitzwilliam Museum which houses world-class collections of art and the quiet and elegant beauty of Kettle's Yard, home to a distinctive mix of contemporary and 20th century art.

Join a guided walking tour around the city centre and discover the people and places key to Cambridge or mingle with the locals to buy a sticky Chelsea bun at the much-loved Cambridge institution, Fitzbillies.

Follow the River Cam upstream as it meanders through grassy fields to the Orchard Tea Gardens at Grantchester, the picture-perfect English village which poet Rupert Brooke famously celebrated in his 1912 poem The Old Vicarage, Grantchester. Relax in a chair under the canopy of blossoming fruit trees where Wittgenstein, Forster and Woolf have all taken tea.

C. Tours

Punting Tours ([web to book a tour](#)): Relax on a Punt Tour of the river and take in the beautiful views of the college "Backs" - the ideal opportunity to take photographs of the iconic colleges, from a unique and privileged viewpoint.

The River Cam runs through the heart of Cambridge enabling you to enjoy fantastic views of the world famous Cambridge College 'Backs' from the comfort of a traditional Cambridge Punt.

King's College Chapel, The Wren Library at Trinity College and the Bridge of Sighs, are just some of the famous Cambridge landmarks you can expect to see during this 45-minute chauffeured punt tour.

Bike Tours ([web to book a tour](#)): Another exciting way to see the outer reaches of the city and the surrounding areas, just as the locals do, is to join a Bike Tour.



City Sightseeing Tours ([web to book a tour](#)): And if you prefer to see Cambridge from an elevated standpoint, then the top deck of an Open Top Bus Tour is the perfect place for you to relax and enjoy the sights of the city in comfort.

D. Food and drinks

Coffee Shops & Tea Rooms: From cute tearooms to quirky cafes, you're spoilt for choice when it comes to coffee shops in Cambridge shire. Hot Number Coffee serves up what many locals believe to be the best brew in the city, Bould Brothers is a quaint little cafe that creates an oasis of calm and tranquillity, and Fitzbillies is a world-famous cake shop; Stephen Fry tweeted about its Chelsea buns, celebrating them as 'unmatched anywhere'.

Street Food: Top quality street food vans continue to pop up all over Cambridge - Norfolk Street Bakery, Thirsty & Hungry, Steak & Honour and Jack's Gelato to name a few! It's a great way to spend time eating delicious food and seeing the city from a different point of view. If you can, the Mill Road Feasts is where you can get the best all in one place.

Restaurants: With something for even the most discerning palate, the selection of restaurants in Cambridge makes choosing somewhere to dine a difficult decision to make. Offering something for all occasions, the choices range from Michelin Star European cuisine to the best tastes of the Orient.

Pubs: Cambridge is overflowing with pubs from the traditional to the trendy. You can find home-cooked food, tasty pub grub, family-friendly meals and gastro pubs to satisfy all appetites. Choose your spot, from a riverside location where you can sip a drink and watch the punts glide by to a cosy country pub full of olde-worlde village charm and a roaring log fire. History and culture is never far away in Cambridge; where else can you stop for a pint at The Eagle pub where Nobelists Crick and Watson sketched the structure of DNA on a napkin?

Bars & Clubs: If it's a late night venue you are looking for then you are really spoilt for choice. With a wide range of city centre nightclubs and top-class bars offering a different style of music every night - there really is something for everyone. Cambridge has a whole host of bars and clubs that are full of people out to have a good time – you could make your way along Regent Street and Downing Street on the weekend to enjoy the lively clubbing scene with a great choice of late night bars pumping music onto the dancefloors throughout the night. Or you could kick back, relax and chill out at some of the city's most stylish places to be seen.